



FOR LEASE

Gwinnett Pavilion

4020 Steve Reynolds Boulevard
Norcross, GA



BUILDING FEATURES:

- 44,260 total square feet
- 18,443 square feet of office
- 3 dock high doors
- 1 drive-in ramp
- 22' clear height
- 40' x 40' column spacing
- Masonry construction
- Free standing building
- Class IV sprinkler system
- Available now

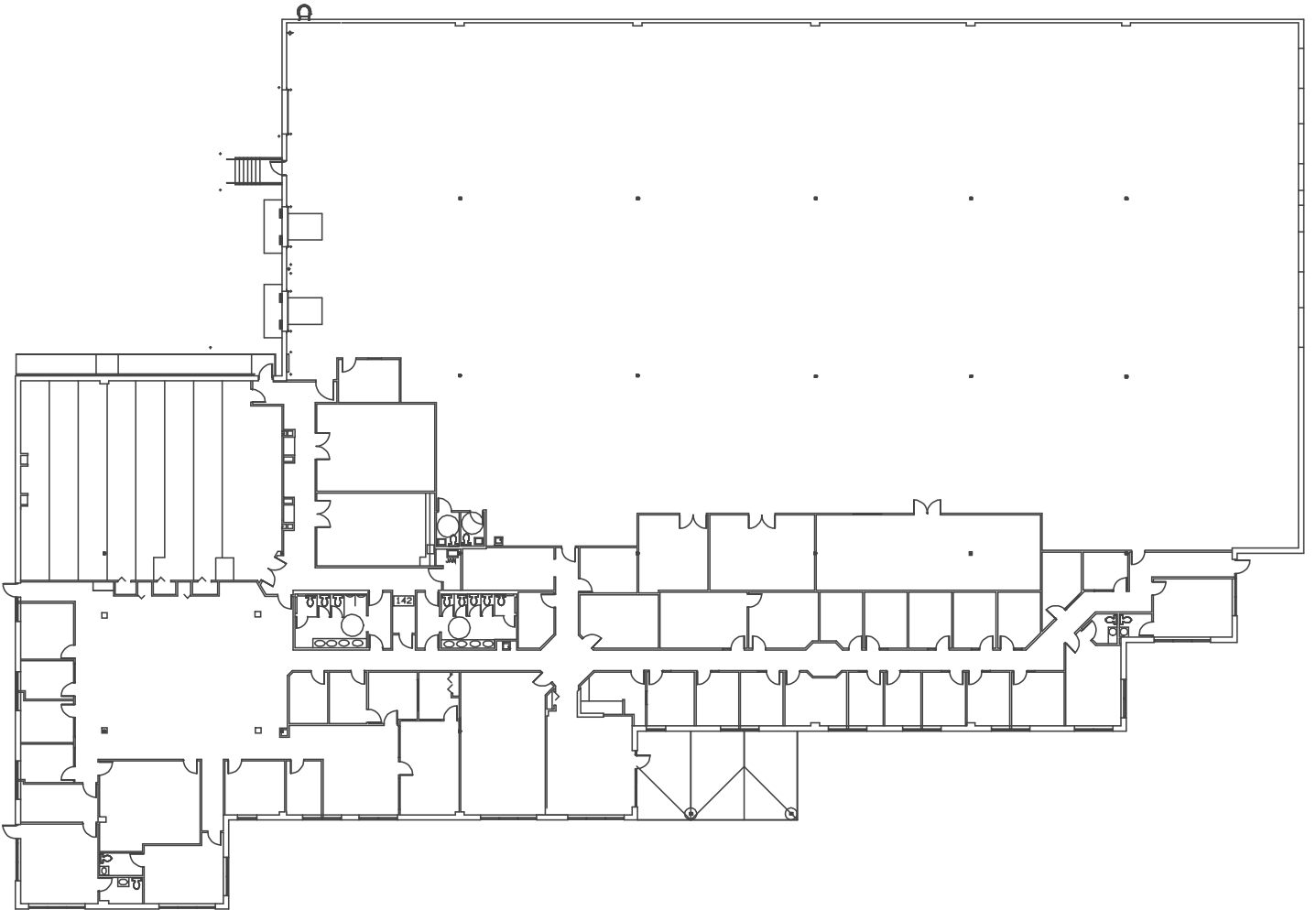
ACCESS:

I-85 exit Steve Reynolds Blvd. or Beaver Run Rd.



Gwinnett Pavilion

4020 Steve Reynolds Boulevard
Norcross, GA



BUILDING FEATURES:

- 44,260 total square feet
- 18,443 square feet of office
- 3 dock high doors
- 1 drive-in ramp
- 22' clear height
- 40' x 40' column spacing
- Masonry construction
- Free standing building
- Class IV sprinkler system
- Available now

weeksrobinson
PROPERTIES

Leasing contact: Bob Currie (404)815-2003 bcurrie@weeksrobinson.com